

Embedded Motion Control

Group 2

D.J.M Bos 1037038

C. Butt 1275801

D. van Dinther 0848638

L.G.L. Janssen 0895324

R. Louwers 0843128



General Requirements

- Execute all tasks autonomously.
- Perform all tasks without bumping into a wall.
- Perform all tasks without getting stuck in a loop.
- Finish both challenges as fast as possible, but at most within 5 minutes.



Challenge specific Requirements

Escape room competition:

- Locate exit
- Keep a minimum distance of 20 cm to walls

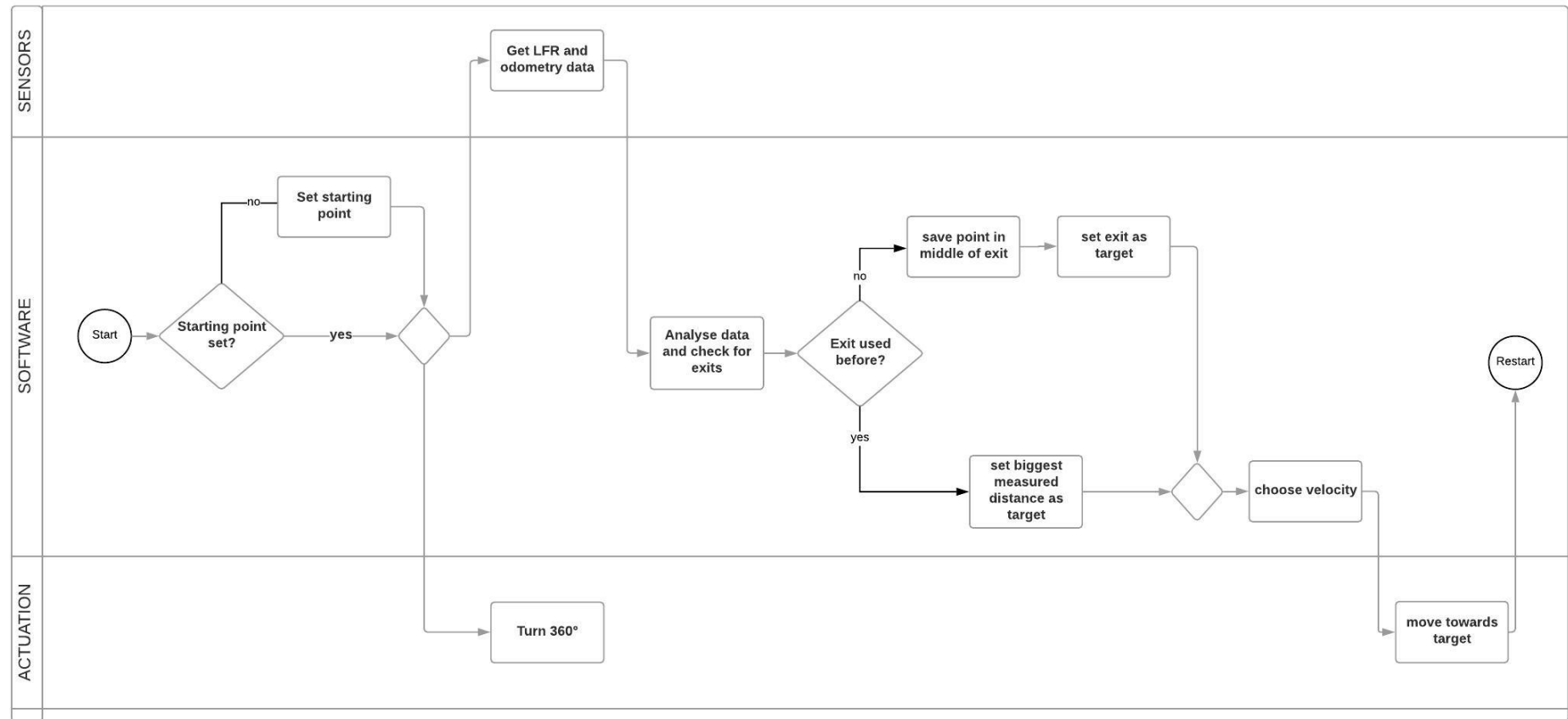
Final competition:

- Explore and map hospital rooms
- Get back to the starting position and park backwards into wall
- Find and top next to the target object
- Use hint

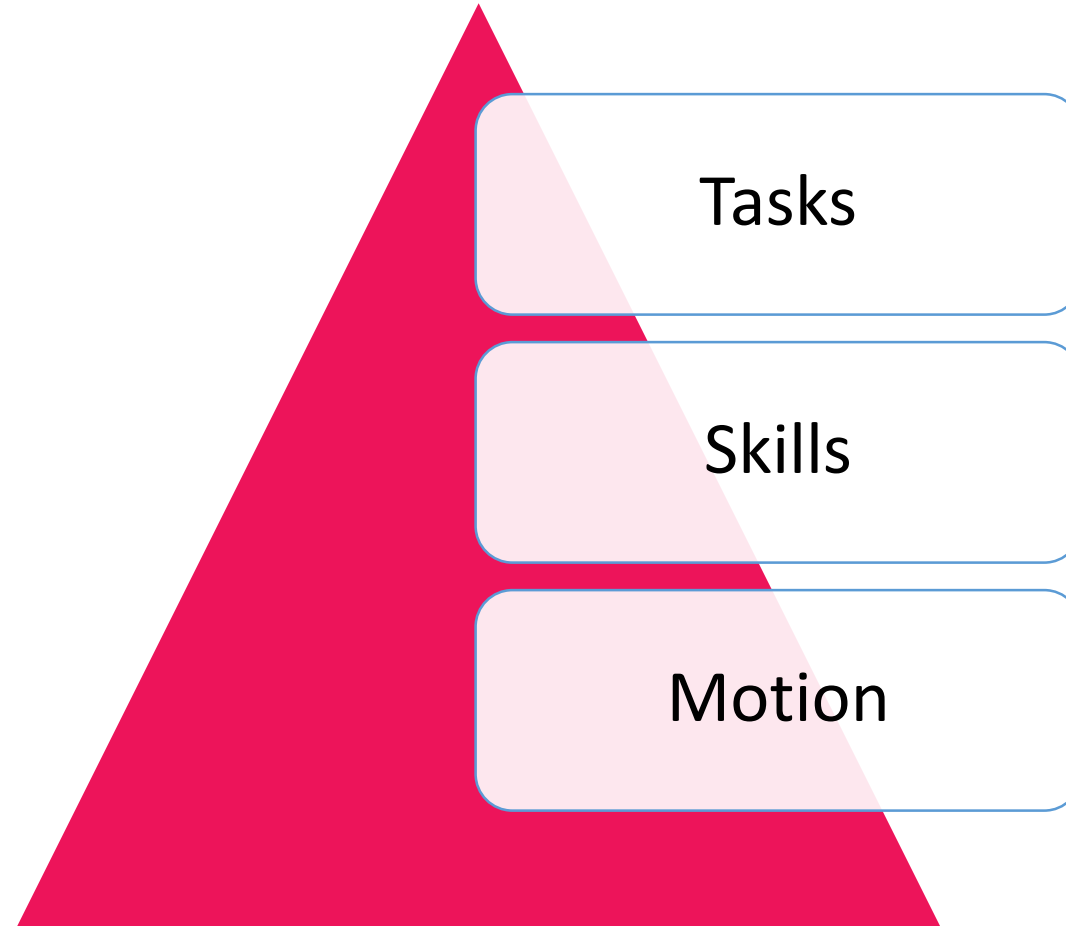


ACTIVITY DIAGRAM HOSPITAL CHALLENGE

EMC Group 2



Basic structure



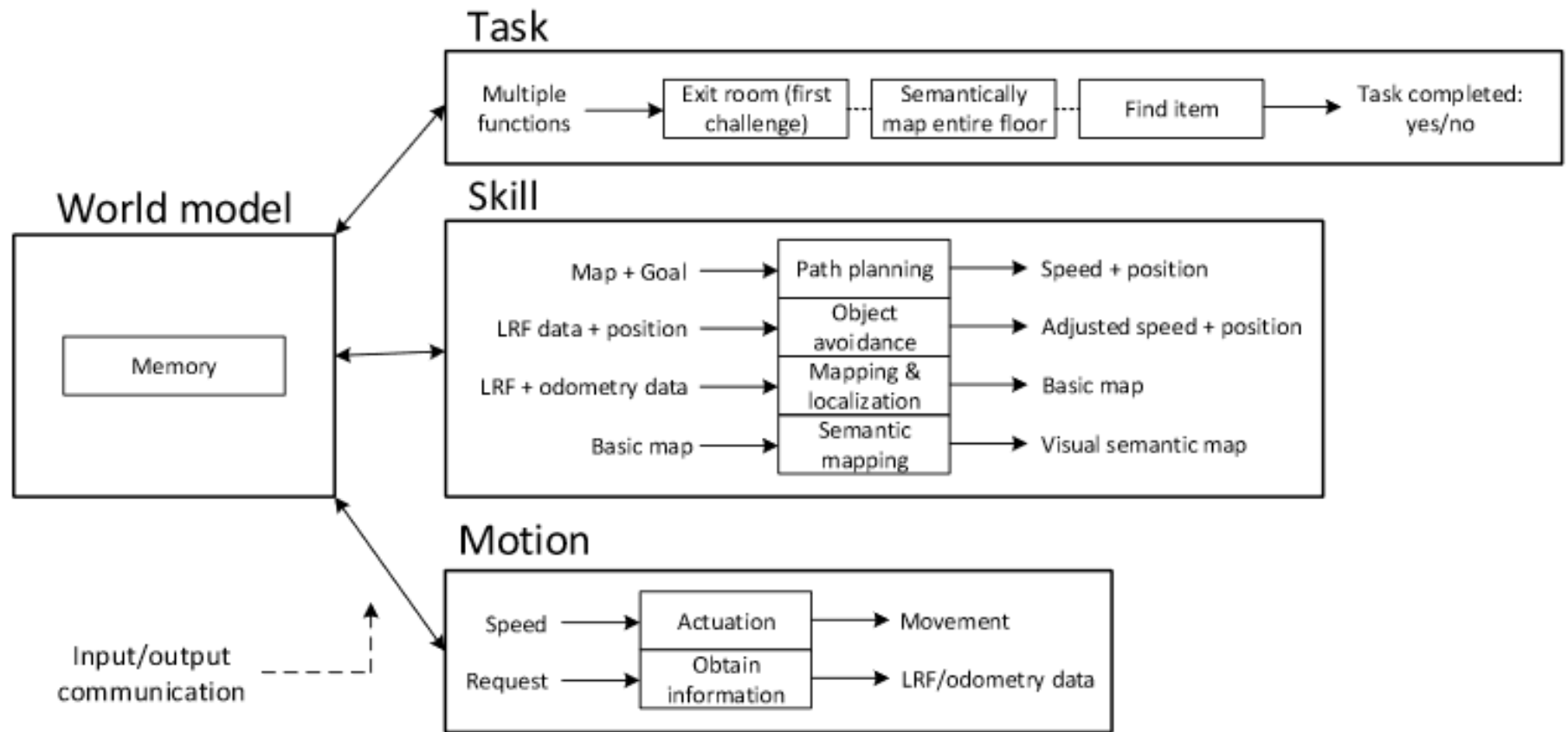


Figure 1: Visual representation of the system's interfaces.